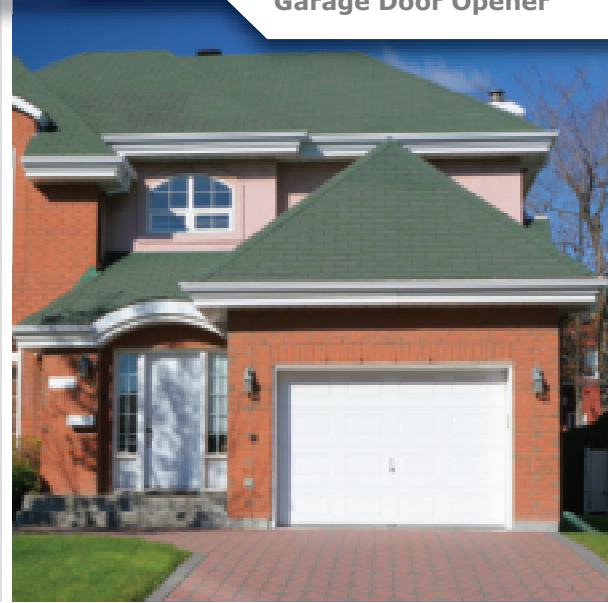
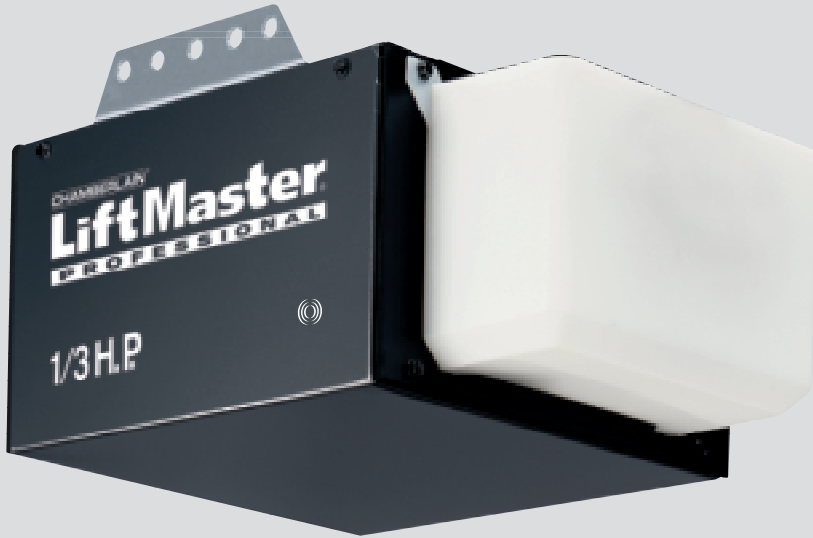


# CONTRACTOR

# 1345/46

1/3 HP Chain Drive  
Garage Door Opener



## DEPENDABILITY COMBINED WITH RELIABILITY.

For consumers who want value and functionality,  
plus the everyday dependability of a LiftMaster®.

Durable 1/3 HP motor and chain drive.

- 75-watt lighting
- Meets all UL325 requirements
- 2-year motor warranty

## ACCESSORIES INCLUDED



### Lighted Door Control Button

**Illuminated push  
button convenience.**  
Operate your door  
from inside the garage.



### Security+® 1-Button Remote Control

**With rolling code  
technology,** you are  
assured of a new code  
with every use. Every  
time you come and go,  
your code changes to  
one of over 100-billion  
new codes, never to  
be repeated.

**At Chamberlain, safety is a major part of our mission.**  
*It's our commitment to you and, quite simply, the way we produce products every day. Our LiftMaster® products are designed to move the largest door in your home, safely, securely and by always putting safety first.*

CHAMBERLAIN®

# LiftMaster®

### UNSURPASSED SAFETY AND SECURITY

All LiftMaster® garage door openers are manufactured with the highest level of safety and monitoring systems to ensure safe operation.

- The Protector System® safety sensors reverse the door automatically if the infrared beam is broken, before contact is made.
- Patented technology detects when a door spring breaks and triggers the motor to reverse the door to the full open position.
- Sensing technology will stop the door from closing if contact is made with a person or object.
- Security+® Rolling Code Technology assures a new code is sent every time the remote is used.
- Patented PosiLock® system ensures the door remains securely locked when it is closed.
- Opener light turns on automatically when The Protector System® safety infrared beam is broken.

### STANDARD SPECIFICATIONS

#### DIMENSIONS

Installed Length: 124"  
 Maximum Door Opening: 7' 6"  
 Headroom Clearance Required: 2"  
 \*Up to 10' with optional 8' or 10' rails

#### CARTONS

Number of Cartons: 2  
 Carton 1 Dimensions and Contents:  
 20" x 12" x 10"  
 Lighted Door Control Button  
 371LM Remote Control  
 Garage Door Opener Head  
 The Protector System®  
 Carton 2 Dimensions and Contents:  
 10' 4" x 5" x 5"  
 Assembled Solid-Steel T-Rail

#### SECURITY+® RADIO CONTROLS

Coding System: Smart Receiver  
 Code Button and Indicator Light  
 Operating Range: 150' (approximately)  
 Operating Temperature: -40°F to 150°F  
 Battery (remote control): 3-Volt  
 Frequency: 315MHz  
 371LM Standard Remote Control with  
 Security+® Anti-Burglary Coding

#### CONVENIENCE/SAFETY

The Protector System®  
 Emergency/Quick Release  
 Automatic Trolley Reconnect  
 Ventilation/Pet Opening  
 Down Safety Reverse  
 Up Safety Stop  
 Door Open/Beam Broken/Lights On  
 PosiLock®

#### ELECTRICAL SPECIFICATIONS

##### POWER

Voltage: 120V AC, 60Hz; Wattage: 540; Current Rating: 4.5  
 UL Listings: Yes; Length of Line Cord: 4' (3-prong)

##### LOGIC TYPE

Solid-State Microcontroller with Built-in Surge Suppressor

##### LIGHTING

Number of Bulbs: 1  
 Maximum Wattage: 75  
 Length of Light Delay: 4 1/2 Minutes  
 Type of Light Delay: Solid-State

#### MECHANICAL SPECIFICATIONS

##### MOTOR

Horsepower: 1/3  
 RPM: 1,625  
 Thermal Protection: Automatic  
 Lubrication: Permanent

##### DRIVE MECHANISM

Drive Means: Full Chain  
 Reduction Means: Gear 16:1  
 Door Linkage: Adjustable Door Arm

##### ADJUSTMENTS

Force: Independent External Up and Down  
 Limit: External

##### TRAVEL RATE

Approximately 7"/Second

##### SHIPPING WEIGHTS

Head: 22 Lbs.  
 Rail: Full Chain—20 Lbs.

##### MATERIALS

Chassis: Steel  
 Rail: Solid-Steel T  
 Trolley: Steel

#### 2-YEAR MOTOR WARRANTY

1 year on all other parts. For more information, refer to owner's manual. LiftMaster® garage door openers meet all current state and federal regulations and UL safety regulations as of date of manufacture.



The in-vehicle universal remote control. See your automobile dealer for availability.

### ENHANCE YOUR LIFESTYLE WITH OPTIONAL ACCESSORIES



#### know for sure the door is closed

Lets you know whether the garage door is open or closed from any room in the house. A flashing red light shows the door is open; a glowing green light indicates the door is closed.

#### GARAGE DOOR MONITOR (915LM)

#### enter without a key

Open your garage door without using a remote control and close with just the push of a button. Also can be programmed with a temporary entry code for friends and service people.



#### WIRELESS KEYLESS ENTRY with SECURITY+® (377LM)



#### access on the go

Operates up to 3 garage doors. Turns garage door opener lights on and off. Fits on keychain or in a pocket or purse.

#### MINI 3-BUTTON REMOTE CONTROL with SECURITY+® (370LM)

#### put control where you want it

For people who want a second control in their garages. A light control button turns garage door opener lights on and off. Auxiliary button can be programmed to open and close a second garage door.



#### WIRELESS CONTROL PANEL (378LM)



#### park perfectly every time

The high-tech solution that helps you park perfectly in your garage! As you pull into your garage the laser is activated and projected onto the dashboard, making it easy to park in the same spot every time.

#### LASER GARAGE PARKING ASSIST (975LM)

CHAMBERLAIN®  
**LiftMaster®**

World's #1 Installed Garage Door Opener  
 THE CHAMBERLAIN GROUP, INC.  
 845 Larch Avenue • Elmhurst, IL 60126  
[www.liftmaster.com](http://www.liftmaster.com)



**WARNING:** Garage doors and openers can be dangerous if not properly installed, tested and operated. Children should be supervised by an adult whenever in or around the garage area.

©2007 LM 1345/1346 06/07  
 The Chamberlain Group, Inc.  
 Printed in U.S.A.

LMCA1345/1346